

Design Standard

Automated External Defibrillators and Cabinets

Purpose

An AED (automated external defibrillator) is a lightweight, portable device that delivers an electric shock through the chest to the heart. The shock can stop an irregular heart rhythm and allow a normal rhythm to resume following sudden cardiac arrest (SCA). SCA is an abrupt loss of heart function. If it's not treated within minutes, it quickly leads to death.

East Side Union High School District installs AEDs discriminately at easily accessible, highly visible, high traffic areas (e.g., student unions, theaters, assembly halls), and at areas of physical exertion (e.g., gymnasiums). Mobile AEDs are used at exterior athletic facilities.

This design standard describes the District's standard AED equipment and installation protocols. Design teams shall incorporate this equipment into capital construction projects as applicable.

Design Standard

A. Philips HeartStart AEDs

The initial installation of 41 AEDs in early 2016 was based on a grant application process facilitated by Racing Hearts (a non-profit organization whose mission is to increase awareness of and improve access to AEDs); the RFP process was conducted by Santa Clara County. Installation of those 41 AEDs established Philips HeartStart FRx AEDs as the District's standard.

ESUHSD has standardized on Philips HeartStart FRx AEDs. This provides emergency responders as well as ESUHSD operating and maintenance personnel a consistent life safety system component. Standardized deployment of HeartStart AEDs achieves uniformity of functionality, operation, maintenance, training, parts availability, and warranty operations for its AEDs.

B. Defibrillator Cabinets

AEDs shall be installed in wall-mounted cabinets. AED cabinets shall be designed specifically for use with Philips HeartStart defibrillators. These come in standard surface mount or semi-recessed configurations. The Cabinets are designed to contain a Philips AED unit plus additional supplies like an oxygen

bottle and spare AED parts. These AED wall Cabinet units are durably made, utilizing heavy-gauge steel. They feature audible and/or visual alarms.

1. Indoor Surface Mounted

- Philips HeartStart AED - Basic Defibrillator Cabinet
- Surface Mounted
- Product Code 989803136531
- Dimensions: 16.5" W x 15" H x 6" D
- Simple audible alarm sounds an 85db warning sound when door is open, and turns off when door is closed; includes a keyed on/off switch. Self-contained 9VDC alkaline battery is provided.



2. Indoor Semi-Recessed

- Philips HeartStart AED – Defibrillator Cabinet
- Semi-Recessed
- Product Code PFE7023D
- Dimensions:
 - Inside compartment: 14" W x 22" H x 6" D
 - Footprint on wall: 16.5" W x 24.5" H x 2.5" D
- Combination of audible alarm and strobe
 - Audible alarm sounds an 85db warning sound when door is open, and turns off when door is closed; includes a keyed on/off switch. Self-contained 9VDC alkaline battery is provided. When alarm sounds siren light flashes.



3. Outdoor Surface Mounted

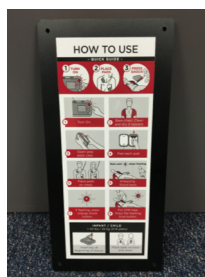
- Philips HeartStart AED - Outdoor Cabinet
- Product Code HST-CAB04
- Dimensions: 15" W x 15" H x 9" D
- Galvanized steel, powder-coated for a durable water-resistant finish. The door is fully gasketed. Able to withstand temperatures ranging from -65° to 120°F
- Combination of audible alarm and strobe
 - Audible alarm sounds an 85db warning sound when door is open, and turns off when door is closed; includes a keyed on/off switch. Self-contained 9VDC alkaline battery is provided. When alarm sounds siren light flashes.



C. Signage

Standard signage provides a common aesthetic language, allowing the ESUHSD community to easily recognize the locations of AEDs in a timely manner, as time is of the essence when an AED is required. Specify signage as follows to achieve a unified and cohesive appearance.

1. 3 Way View Wall Sign
 - Widely available commercially from a variety of vendors. Match simplicity of sign shown in image (white background, red heart, black “AED”).
2. Philips HeartStart AED Instructional Sign
 - HeartStart “How To Use” label attached with spray adhesive to ¼” black Palight Foam PVC panel, cut to ¾” larger than label and routed for eased corners. Holes at each corner for mechanical fastening with panhead screws to wall surface.
3. Building Exterior Signage
 - Preferred option: Stick-on label on glass sidelights or glass doors/lights.
 - Second option: Stick-on label on ¼” black Palight Foam PVC panel, cut to ¾” larger than label and routed for eased corners. Holes at each corner for mechanical fastening with panhead screws to wall surface.



Approved Manufacturers

- Philips HeartStart FRx AEDs
- Philips HeartStart AED Cabinets

Substitutes Allowed?

- No substitute to Philips HeartStart AEDs and cabinets is allowed. Pursuant to Section 3400 of the Public Contract Code: the selected AEDs are now in use on the particular public improvement described as East Side Union High School District. At each instance in these specifications that a designated material, product, thing or service is designated by the brand name “Philips HeartStart”, “Philips HeartStart” is designated to match the existing systems that are in place at each campus and the

District Administration Building. The Contractor will furnish and install Philips HeartStart AEDs and cabinets as required, and no substitutions shall be deemed to be “or equal” or allowed.

Associated Construction Specifications

- Not applicable

End of Document